

An aerial view of a coastal area. In the foreground, there's a green hill with a lighthouse and several white buildings. A road or path leads from the buildings down to a helipad marked with a white 'H' on a grey square. The background shows the blue ocean and some rocky islands.

SAREX 2020 - Helipads in Urban and New Territories Area

INSTALLATION GUIDE & DISCLAIMER

A number of helipads across Hong Kong for FSX only

June 2020

Introduction:

Project SAREX 2020 - Helipads in Urban and New Territories Areas (SAREX 2020) covers a number of helipads across Hong Kong and brings your local flying experience to a whole new level! You can enjoy the excitement of flying helicopters and carrying out different kinds of flight, exploring the amazing scenery of Hong Kong!

This scenery pack (Part I) contains the following helipads:

Code	Name	Location
CC04	Cheung Chau Helicopter Landing Pad	22°12.48'N, 114°02.01'E
HK01	Peng Chau North Helicopter Landing Pad	22°17.41'N, 114°02.19'E
HK02	Lamma Yung Shue Wan Helicopter Landing Pad	22°13.49'N, 114°06.52'E
HK05	Lamma Island Power Station Helicopter Landing Pad	22°21.93'N, 114°10.38'E
HK24	Pamela Youde Hospital Helicopter Landing Pad	22°16.16'N, 114°14.18'E
JB09	Shatin Fire Station Helicopter Landing Pad	22°23.46'N, 114°11.98'E
LT32	Explosives Depot at Kau Shat Wan Helicopter Landing Pad	22°16.32'N, 114°01.29'E
PT02	Waglan Island Helicopter Landing Pad	22°10.97'N, 114°18.24'E
TL13	Tuen Mun Hospital Helicopter Landing Pad	22°24.43'N, 113°58.51'E
WB15	PTU HQ Fanling Helicopter Landing Pad	22°29.38'N, 114°07.95'E
KDB	Heliservices Operations and Maintenance Base Helipad	22°25.86 'N, 114°06.63'E

Disclaimer:

This scenery pack is free version created by Virtual Government Flying Services (VGFS). All rights reserved. VGFS is not responsible for any potential damages to computer systems due to downloading the software and use of the software. You assume the risk of use and no support. All information was found from internet, the authors do not guarantee the accuracy.

Authors:

Willie YIP (for CC04, HK01, HK05, LT32, PT02, TL13, WB15, KDB)

Anson CHU (for HK02, JB09)

Macro LEUNG (for HK24)

Adrian CHOY (Clerical Support)

Software used:

- Google Sketch
- Airport Design Editor X

Copyright:

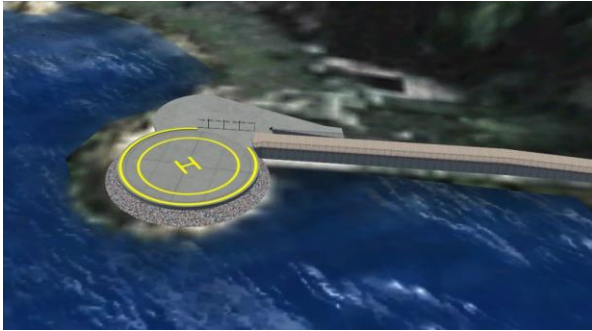
- commercial use of this scenery (in any kind) is prohibited.
- Do not republish or modify for republish without authors permission
- All files used in this scenery should not be modified or used in any other scenery or be redistributed.
- Uploading or linking of this scenery without authors permission is prohibited.

Instruction:

1. Place SAREX 2020 Part 1 folder into Addon Scenery folder. i.e. ...\\Addon Scenery\\
2. Go to Setting -> Scenery Library -> Add Area -> SAREX 2020 Part 1

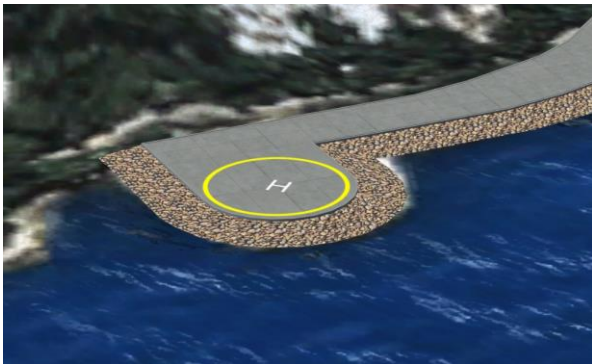
Gallery:

Cheung Chau Helicopter Landing Pad (CC04)



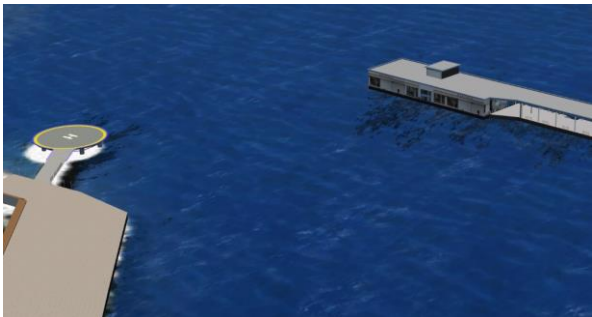
Cheung Chau is an outlying island with a population of 22,740, which creates a demand in helicopter casualty evacuation services. GFS transports patients to Hong Kong Island regularly from the helipad.

Peng Chau North Helicopter Landing Pad (HK01)



Also an outlying island, Peng Chau is inhabited and requires helicopter service to transfer residents in need to receive medical services on Hong Kong Island.

Lamma Yung Shue Wan Helicopter Landing Pad (HK02)



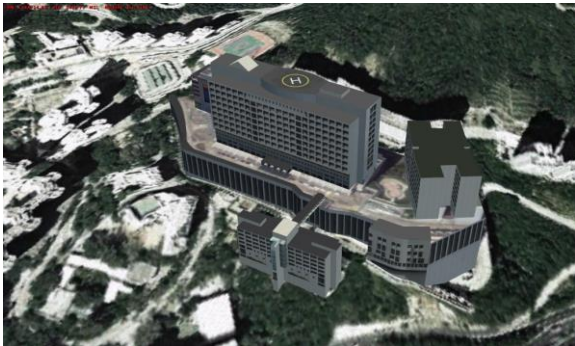
Yung Shue Wan, or Banyan Bay, is the center of Lamma Island, the third largest island in Hong Kong. It is also a famous tourist attraction and houses a power station.

Lamma Island Power Station Helicopter Landing Pad (HK05)



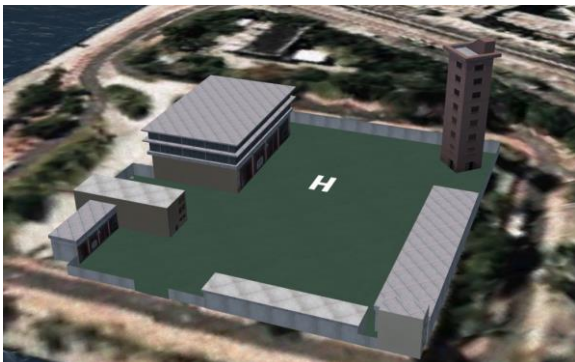
Operated by Hongkong Electric, it is the second largest coal-powered station which generates electricity for Hong Kong Island.

Pamela Youde Hospital Helicopter Landing Pad (HK24)



Pamela Youde Nethersole Eastern Hospital is the primary destination for survivors in life-threatening conditions. Very urgent patients rescued by GFS will be sent to Eastern Hospital and transferred to the A&E department immediately.

Shatin Fire Station Helicopter Landing Pad (JB09)



Sha Tin Fire Station is also home to the headquarters of New Territories Fire Command. The helipad is located inside the complex

Explosives Depot at Kau Shat Wan Helicopter Landing Pad (LT32)



Kau Shat Wan houses the largest explosives depot in Hong Kong. Located on Lantau Island between Mui Wo and Discovery Bay, it is accessible by air or sea.

Waglan Island Helicopter Landing Pad (PT02)



Situated at the south-easternmost tip of Hong Kong, Waglan Island is home to a lighthouse and the weather station of Hong Kong Observatory. HKO provides meteorological reports based on station data.

Tuen Mun Hospital Helicopter Landing Pad (TL13)



Tuen Mun Hospital also has a helipad in its premises. However, its operation is strictly limited due to noise and buildings in the vicinity.

PTU HQ Fanling Helicopter Landing Pad (WB15)



The Police Tactical Unit of the Hong Kong Police Force has its headquarters in Fan Ling. It also serves as a training school, where trainees receive training by GFS.

Heliservices Operations and Maintenance Base Helipad (KDB)



Heliservices (HK) Limited is a local helicopter operator specializing in charter operations and tourist flights. It is based near Kadoorie Farm, where daily operations are carried out.